

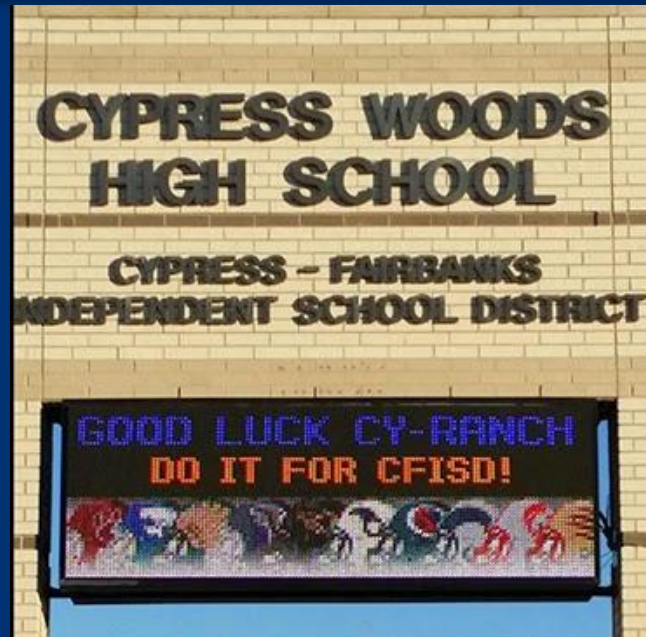


Enterprise Communications Network Operational Highlights

Oscar Villar has spent a significant amount of time working with both BlueCat and Fortinet in an attempt to ensure that safe search is implemented for all users using all browsers. To implement a comprehensive solution will take some effort, therefore the research is ongoing.



Andrew Tran has been working with Harris County Department of Education in an attempt to provide a direct connection between CFISD and HCDE for all Moodle traffic.



Elizabeth Montes successfully configured the Cy Woods marquee and it is now online. The campus admin staff received a brief training from Spectrum on how to manage the marquee software.

Elizabeth Montes and **Anna Senties** also worked on the marquee at the Exhibit Center. **Elizabeth** installed the software on Denise Kubecka's laptop so that Denise could manage the marquee. Lastly, **Elizabeth** coordinated a training session with the vendor for Denise.





Enterprise Communications Network Operational Highlights



Oscar Villar



Andrew Tran



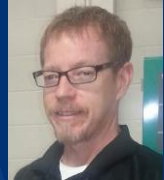
Ray Leung



Roland Padilla



Charles Newton



David Glennon

Tuesday, May 17, 2016 a fire broke out at Bleyl MS in a storage room of the theater department where clothing was stored. The fire department was called out to extinguish fire. The water used to extinguish fire entered into a nearby computer classroom and IDF/G closet resulting in 2" of water throughout. The smell of electrical burning was apparent. Therefore, it was decided to power down IDF/G for safety reasons. **Roland Padilla** and **Anna Senties** managed the cleanup of the IDF/G closet.



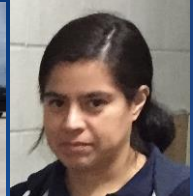
Thomas Hollister



Tony Rogers



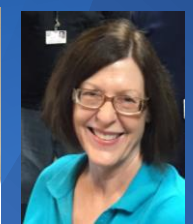
Anna Senties



Elizabeth Montes



Glen Carpenter



Janette Martinez

Enterprise Communication Network Team



Enterprise Communications Network Operational Highlights

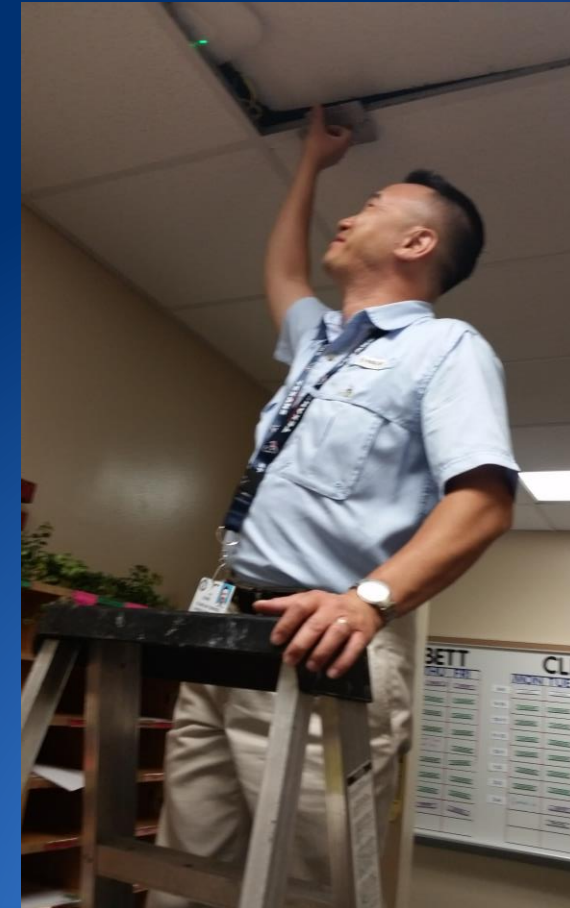
Ray Leung has joined the team and hit the ground running! Pictured below is **Ray** working with **Anna Senties** on installing new Aruba wireless access points (APs) at the Food Production Warehouse.



Ray Leung located a dangling wireless AP in the gym at Watkins MS. He is currently waiting for a lift in order to remount the AP.



Ray Leung at Frazier ES troubleshooting the legacy Cisco wireless APs.





Enterprise Communications Network Operational Highlights



Oscar Villar



Andrew Tran



Thomas Hollister



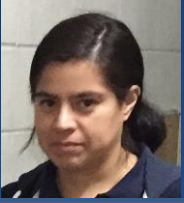
Tony Rogers



Ray Leung



Anna Senties



Elizabeth Montes

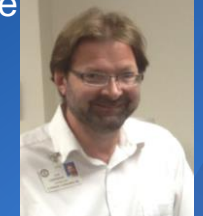


Roland Padilla

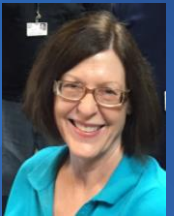


Charles Newton

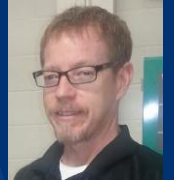
Glen Carpenter was on a fact finding mission to gather data on the activities that HVAC and Facilities are currently removing and installing in the MDF/IDF closets at campuses. **Glen** met with David Tooker at Facilities concerning network closet thermostats. According to David, "Each closet should, and or will, have a separate A/C unit that is standalone from the building A/C. The existing building air shall be removed from the room when the new unit is installed. " Old thermostat is removed and behind a wall plate. The new Liebert's are monitored by Facilities. Per Mr Tooker, when alarms are generated, Facilities creates a ticket and dispatches someone to investigate. The controls are currently pre-set by Facilities.



Glen Carpenter



Janette Martinez



David Glennon

Enterprise Communication Network Team