

ABSOLUTE™

Cypress-Fairbanks ISD



Tasha Bowser

Senior Account Manager, Absolute

Agenda

- Current IT Environment
- Current Security Landscape
- Absolute DDS Overview
 - » Assets
 - » Alerts
 - » Action

Cy-Fair ISD Snapshot

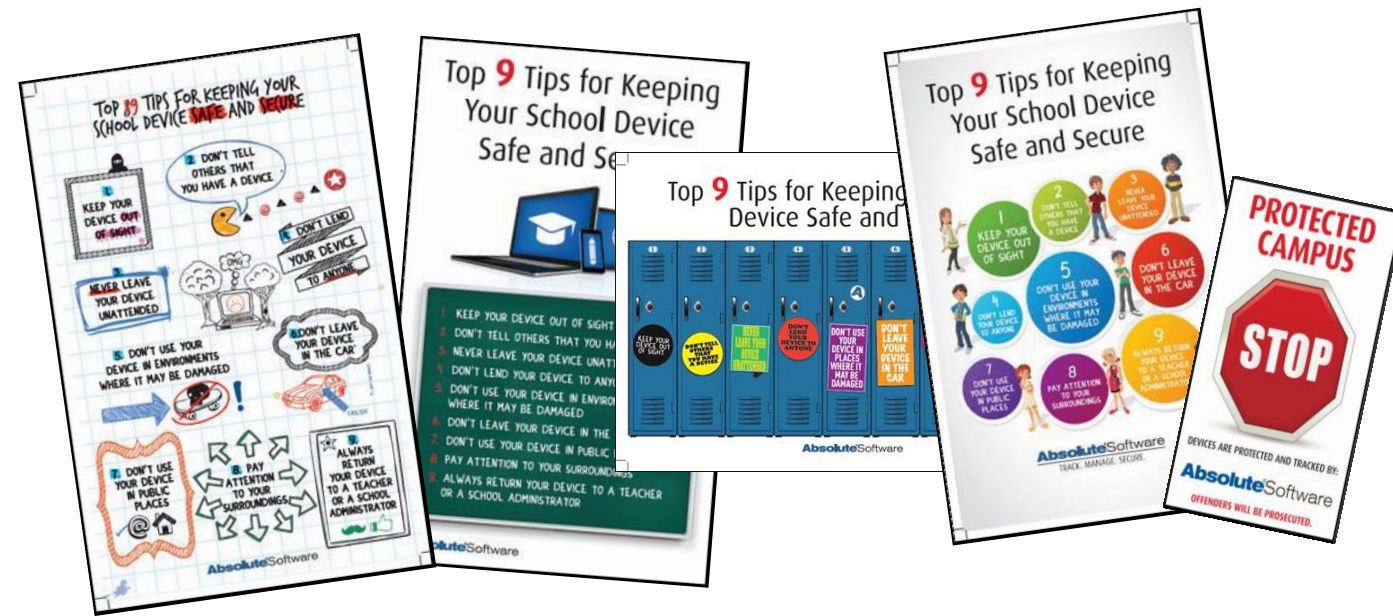
- Currently Installed on 17,878 devices
- In the past 5 years Absolute has paid out \$91k in Service Guarantees
- In the past 5 years Absolute has recovered 231 computers

Absolute Safe Schools-Protect, Deter, Recover

Absolute Safe Schools Program is designed to support educational organizations in safeguarding mobile devices from loss and theft.

HOW IT WORKS:

- Absolute Safe Schools provides best practices for students and employees
- The Absolute Investigations team will work with schools, communities, and individuals to educate them on device loss and theft
- Program components include:
 - Planning
 - Education
 - Ongoing awareness campaigns
 - Lost & Found services



WHAT WE DO

Absolute® provides unprecedented visibility, persistent endpoint security and data risk management solutions for computers, tablets, and smartphones.

Cy-Fair ISD knows:

- Where an asset is, who has it, what's on it
- If security applications are healthy
- Sensitive student data is protected

HOW WE DO IT

Our Persistence® technology is embedded into the core of most devices at the factory. Once activated, it provides you with comprehensive visibility into all of your devices allowing you to confidently manage mobility, investigate potential threats, and take action if a security incident occurs. Most importantly, you can apply remote security measures to protect each device and the data it contains.

No other technology can do this.

SCCM Status Report

The SCCM Status Report shows information about the current status of the SCCM client installed on managed Windows devices. This report can indicate devices where the SCCM client is missing or not functioning correctly. The number of issues for the particular device are collated within the 'Issue Count column'.

Identifier▲	Device Name	SCCM Status	Status Date	Issue Count	Username	Serial Number	Make	Model	Operating System
0PCRWQD1V0AA18Y10781	SARS-WIN7-64	Absent	07.08.2015 19:05:47	0	QA	VMWARE 56 4D DB E7 18 A6 99 56 8B ED C6 1D 27 8F 7	VMWARE, INC.	VMWARE_VIRTUAL	Windows 7 (64 bit)
1L0CFETB2JA12IQI5279	C400000TM6	Absent	08.07.2015 17:25:07	2	ABSOLUTE\qa-automation	VMWARE 56 4D E4 E3 38 56 97 BA CE 30 EF 1B A7 D9 0	VMware, Inc.	VMware Virtual Platform	Windows 7 (64 bit)
1L0CFETB2JA12IQI5293	JC-SARS-WIN8-64	Absent	28.11.2014 16:41:58	0	QA	VMWARE 56 4D FC 1E 58 1C 75 E6 B5 6F C9 E8 27 29 2	VMware, Inc.	VMware Virtual Platform	Windows 8 (64 bit)
1L0CFETB2JA62IQI5577	TAMBUIPC	Absent	02.04.2015 01:41:23	0	TamBui	Non-unique S/N	innotek GmbH	VirtualBox	Windows 8 (32 bit)
1L0CFETB2JA62IQI5578	WIN-TSV0SNAIGMG	Absent	02.04.2015 04:38:10	0	it	VMWARE 56 4D 3C 60 B5 C6 3D D7 2E 9D 83 6A D6 05 5	VMware, Inc.	VMware Virtual Platform	Windows 8.1 (64 bit)
1L0CFETB2JA62IQI5581	ADMIN-PC	Absent	02.04.2015 05:08:48	0	admin	Non-unique S/N	innotek GmbH	VirtualBox	Windows Vista (32 bit)
1L0CFETB2JA62IQI5584	FRESH_7X32-PC	Absent	17.07.2015 00:50:55	0	FRESH_7X32	VMWARE 56 4D 3A 0F 9F C8 D1 93 07 1C C6 B5 36 29 D	VMware, Inc.	VMware Virtual Platform	Windows 7 (32 bit)
1L0CFETB2JA62IQI5585	ADMIN-PC	Absent	03.04.2015 03:57:49	0	Admin	Non-unique S/N	innotek GmbH	VirtualBox	Windows 7 (32 bit)
1L0CFETB2JA62IQI5606	FRESH_8X32	Absent	17.07.2015 00:55:46	0	admin	VMWARE 56 4D 21 B1 E7 38 12 9A C1 F7 99 AF E9 6F 9	VMware, Inc.	VMware Virtual Platform	Windows 8 (32 bit)
1L0CFETB2JA62IQI5642	ADMIN-PC01	Needs attention	16.07.2015 00:44:53	16	Admin	Non-unique S/N	INNOTEK GMBH	VIRTUALBOX	Windows 7 (32 bit)

Encryption Status Report

The Encryption Status Report allows you to monitor the health of your encryption solutions and set alerts to notify you if encryption on a device has failed or if it has been deactivated. If a device is lost or stolen, you can provide the encryption history report to data protection regulators to prove encryption was in place and properly working at the time of the security incident:

Identifier▲	Device Name	SCCM Status	Status Date	Issue Count	Username	Serial Number	Make	Model	Operating System
0PCRWQD1V0AA18Y10781	SARS-WIN7-64	Absent	07.08.2015 19:05:47	0	QA	VMWARE 56 4D DB E7 18 A6 99 56 8B ED C6 1D 27 8F 7	VMWARE, INC.	VMWARE_VIRTUAL	Windows 7 (64 bit)
1L0CFETB2JA12IQI5279	C400000TM6	Absent	08.07.2015 17:25:07	2	ABSOLUTE\qa-automation	VMWARE 56 4D E4 E3 38 56 97 BA CE 30 EF 1B A7 D9 0	VMware, Inc.	VMware Virtual Platform	Windows 7 (64 bit)
1L0CFETB2JA12IQI5293	JC-SARS-WIN8-64	Absent	28.11.2014 16:41:58	0	QA	VMWARE 56 4D FC 1E 58 1C 75 E6 B5 6F C9 E8 27 29 2	VMware, Inc.	VMware Virtual Platform	Windows 8 (64 bit)
1L0CFETB2JA62IQI5577	TAMBUIPC	Absent	02.04.2015 01:41:23	0	TamBui	Non-unique S/N	innotek GmbH	VirtualBox	Windows 8 (32 bit)
1L0CFETB2JA62IQI5578	WIN-TSV0SNAIGMG	Absent	02.04.2015 04:38:10	0	it	VMWARE 56 4D 3C 60 B5 C6 3D D7 2E 9D 83 6A D6 05 5	VMware, Inc.	VMware Virtual Platform	Windows 8.1 (64 bit)
1L0CFETB2JA62IQI5581	ADMIN-PC	Absent	02.04.2015 05:08:48	0	admin	Non-unique S/N	innotek GmbH	VirtualBox	Windows Vista (32 bit)
1L0CFETB2JA62IQI5584	FRESH_7X32-PC	Absent	17.07.2015 00:50:55	0	FRESH_7X32	VMWARE 56 4D 3A 0F 9F C8 D1 93 07 1C C6 B5 36 29 D	VMware, Inc.	VMware Virtual Platform	Windows 7 (32 bit)
1L0CFETB2JA62IQI5585	ADMIN-PC	Absent	03.04.2015 03:57:49	0	Admin	Non-unique S/N	innotek GmbH	VirtualBox	Windows 7 (32 bit)
1L0CFETB2JA62IQI5606	FRESH_8X32	Absent	17.07.2015 00:55:46	0	admin	VMWARE 56 4D 21 B1 E7 38 12 9A C1 F7 99 AF E9 6F 9	VMware, Inc.	VMware Virtual Platform	Windows 8 (32 bit)
1L0CFETB2JA62IQI5642	ADMIN-PC01	Needs attention	16.07.2015 00:44:53	16	Admin	Non-unique S/N	INNOTEK GMBH	VIRTUALBOX	Windows 7 (32 bit)

//ABSOLUTE™

CONFIDENT TO THE CORE.