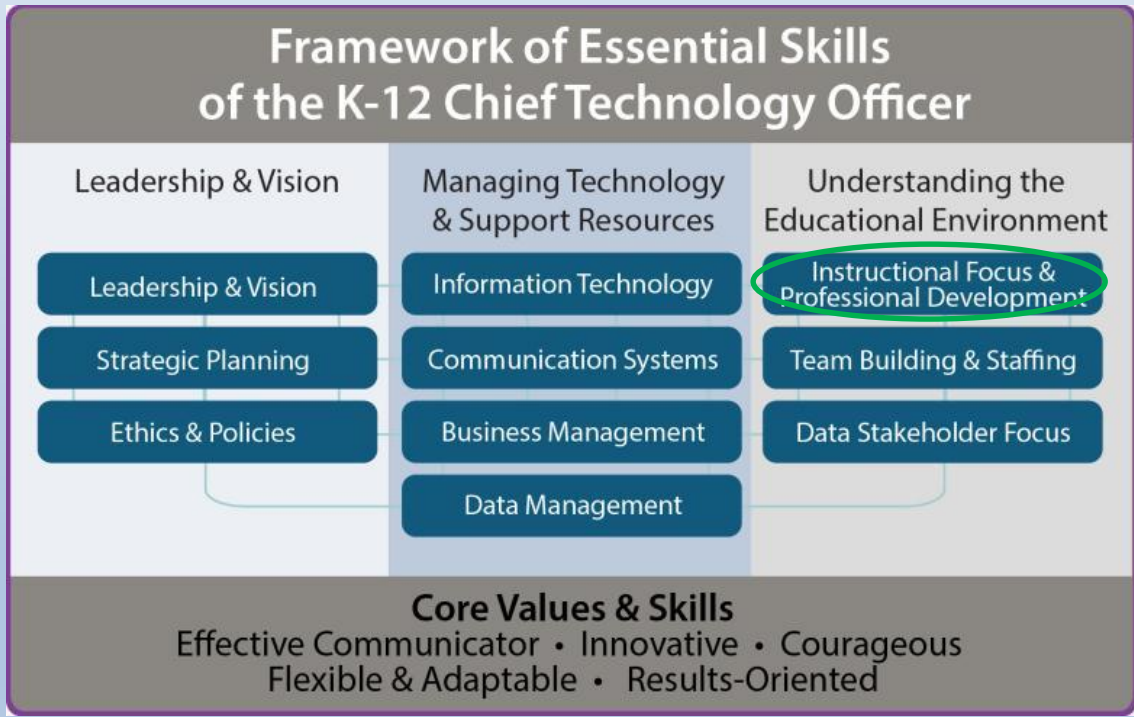




Technology Services Performance Excellence Framework



Based on the Consortium of School
 Networking Certified Education Technology
 Leaders (CSNETLE)

Understanding the Educational Environment

Instructional Focus and Professional Development



Instructional Focus
+ Prof. Development

“Budget, plan, and coordinate ongoing, purposeful professional development for all staff using technologies; ensure a sufficient budget through the implementation and assessment process of emerging technologies.”

- Budget, plan, and coordinate professional development
- Implement emerging technologies
- Assure technology integration in instruction



Instructional Focus and Professional Development

4E Stay abreast of state and national standards, benchmarks, and frameworks for technology literacy



- Professional Learning Community (PLC) and Associations – a forum grouped or organized in some way by job role or function, and who are committed to working together to better their practice
- PLCs and Associations offer opportunities to develop and sustain a culture of learning and support
- These groups can build a shared vision and capacity for instructional excellence and improved student achievement
- Offerings must be timely, specific and cost-effective
- Walk the walk – be an expert
- Benchmark with district in your region, state, and nation
- Learn best practices
- Help others be successful
- Share information
- Use professional networking to stay current about research and technology innovations



Instructional Focus and Professional Development

4E Stay abreast of state and national standards, benchmarks, and frameworks for technology literacy



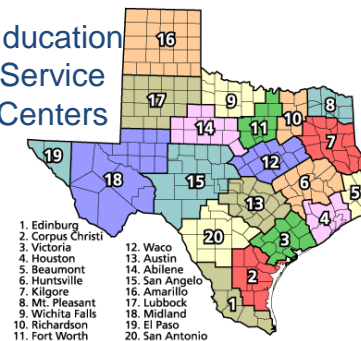
Instructional Focus
+ Prof. Development

- How do you stay abreast of important information?
- Who do you associate with to help you be an expert in your field?
 - How do you participate and how much do you contribute?

Associations



Education
Service
Centers



Respected Friends and Colleagues

