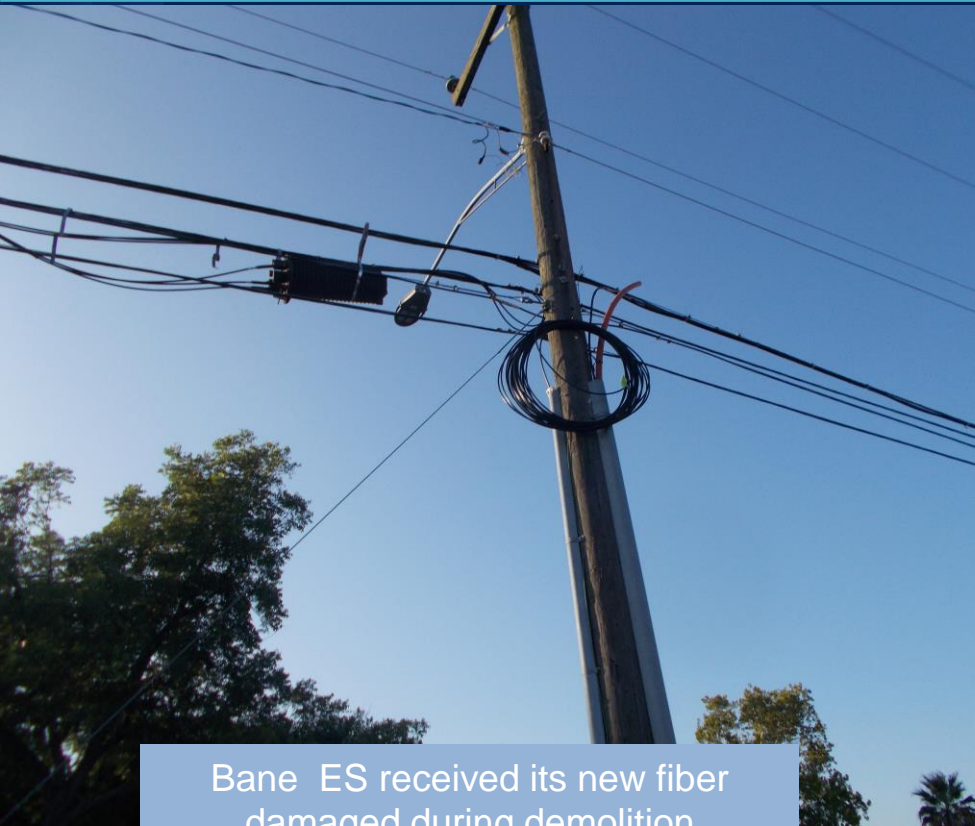




Bond 6.1

Bane Elementary School Construction Update



Bane ES received its new fiber damaged during demolition



Bane ES main MDF fiber service loop

Michael Raspet received notice from PS/Lightwave that the new fiber was which was damaged during demolition was pulled into the school on Thursday, August 17, 2017. Plans are for PS/Lightwave to return Friday August 18, 2017 to splice and terminate the fiber.



Bane Elementary School Annex Demolition



Demolition of the Bane ES Annex Building

Michael Raspet was onsite at Bane ES and drove by what remains of the Bane ES Annex building. This building was built in 1936 and was therefore the oldest building of all CFISD campus buildings. Many of the materials salvaged during the demolition were recycled.