



Enterprise Communications Network Operational Highlights



Oscar Villar worked to implement safe search redirection with Bluecat DNS for Google, YouTube and Bing. The DNS redirection works on all parts of the CFISD network, including BYOT. The redirection was activated and ready for production after the Thanksgiving holiday on **Monday, November 28, 2016**. The redirection is needed to filter explicit search results, thus the search results are safer for students.



Oscar Villar



Oscar Villar and **Andrew Tran** spent a significant amount of time on Monday, **November 28, 2016** troubleshooting Moodle services for the CFISD students. The two discovered that Moodle stopped working for students on November 26, 2016 at 3:15am. This time aligned itself with changes that Harris County Department of Education (HCDE) made. Ultimately, HCDE rectified the issue and Moodle services were restored.

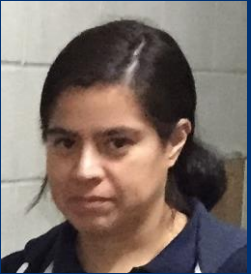


Andrew Tran



Enterprise Communications Network Operational Highlights

Elizabeth Montes noticed the Carlton Center went down during the Thanksgiving break due to a power outage. **Elizabeth** had the network restored early Monday morning, November 28, 2016, before the start of business.



Elizabeth Montes



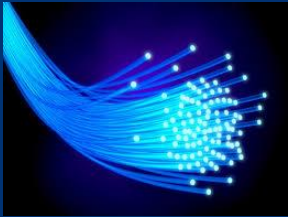
Tony Rogers, Jennifer Miller, and Ray Leung coordinated with Facilities to bring their man lift onsite at Watkins MS and remove an AP that had been dangling.

A wireless service request was entered for Tipps ES stating that the Read180 Class was having connectivity issues. **Ray Leung** and **Glen Carpenter** found that that the wireless was working fine, but the class had old laptops that could only connect to the 2.4Ghz. The two were told that new laptops were arriving later that day, **Tuesday, November 30, 2016**. Once the new devices arrived, **Glen** returned to the school to verify all the laptops were connecting to the 5Ghz band.

Tony Rogers and **Glen Carpenter** worked on outages Monday morning, November 28, 2016, at Labay MS, Aragon MS, and Andre ES. These outages were a result of a fiber issue. **Tony** opened a service request with Phonoscope and the issue was ultimately resolved.



Tony Rogers



There were reports that the old wireless network, Cfid1, was still being broadcasted at Sheridan ES. **Ray Leung** and **Glen Carpenter** went onsite and removed all of the older Cisco APs they could locate.



Ray Leung



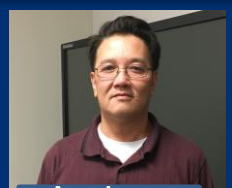
Glen Carpenter



Enterprise Communications Network Operational Highlights



Oscar Villar



Andrew Tran

Ray Leung evaluated three requests pertaining to lack of wireless coverage at Cy Ridge HS. After reviewing the requests, Ray submitted the information for Layer3 Communications to review. The end result will be installing additional APs the noted areas.



Ray Leung

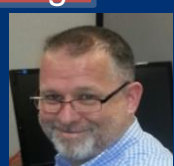
Janette Martinez
Continues to Provide Invaluable Support in the Following Areas:



- Manage Campus Final Inspections
- Maintain POE Upgrade Spreadsheet
- Maintain CAD Drawings and Wireless Heat Maps, plus Managing Closet Changes
- Manage the Campus Wireless Inspection
- Manage Wireless Outdoor AP Schedule
- Maintain Inventory Spreadsheet for Spare Components
- Manage the Schedule for Removing Cisco APs at ES Level
- Assist Both NMO and ECN Teams with iSupport Requests



Roland Padilla



Charles Newton



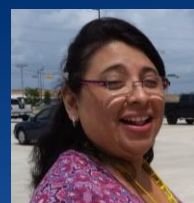
David Glennon



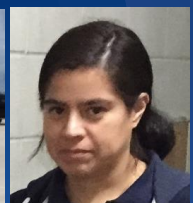
Thomas Hollister



Tony Rogers



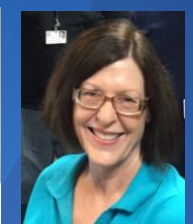
Anna Senties



Elizabeth Montes



Glen Carpenter



Janette Martinez

Enterprise Communication Network Team